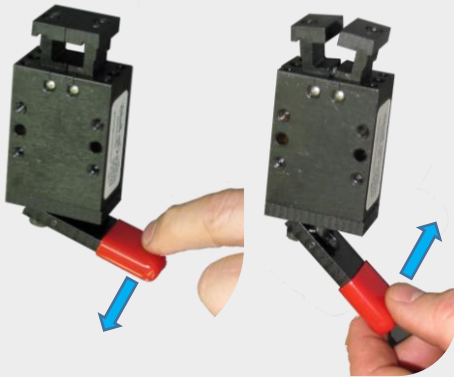


# Clip Buddy

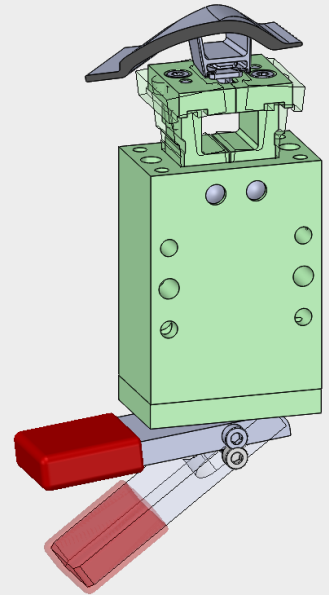
Patent 10,072,685

## Clip holding device for fixtures

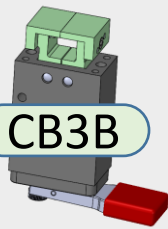
### Lever Action Open and Close



- Compact design, requires less access space for actuation
- Solid, snap-action closing
- Smooth, operator-friendly motions
- Extensive Options Available:
  - 13 Jaw Options
  - 5 Mounting Brackets
  - 4 Manual Levers
  - Remote cable and pneumatic options



CB3B



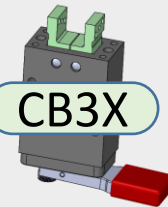
CB3BSS



CB3L



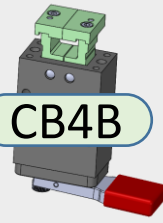
CB3X



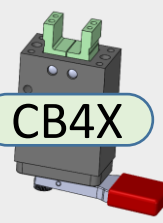
CB4A



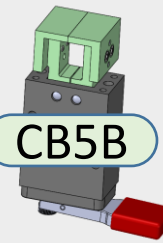
CB4B



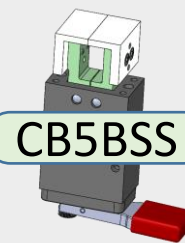
CB4X



CB5B



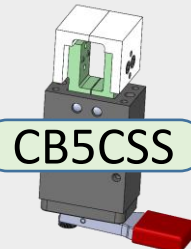
CB5BSS



CB5C



CB5CSS



CB5L



CB5X



\* CBxxSS have SS 420 end pieces (standard versions have 1045 tool steel end pieces)



# OPTIONS AND ACCESSORIES

# Clip Buddy

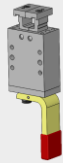
Patent 10,072,685

## Actuation Options

(short lever shown on opposite page is standard)

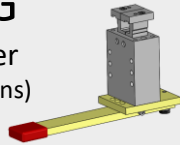
### CB4L90

90 degree lever  
(4 orientations)



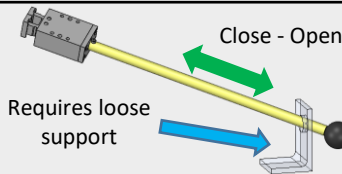
### CB4LG

Long Lever  
(4 orientations)



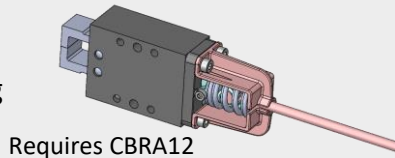
### CB4LS

Long Shaft  
(customer can cut to length)



### CB4CBL

Cable Assembly 2m lg  
(CB4CBL-3M: 3m)



Requires CBRA12

### CB4CBL2

Cable Assembly 2m lg  
(CB4CBL2-3M: 3m)



Requires CBRA12

### CB4CYL

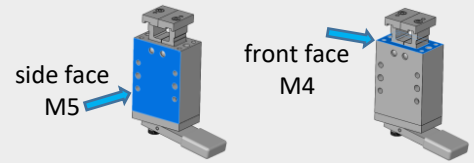
Pneumatic  
Cylinder



(additional information sheet is available for pneumatic actuation)

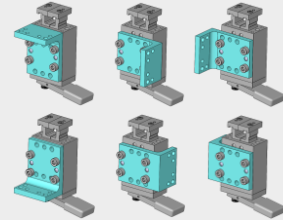
## Mounting Options

Standard  
Mounting  
(included)



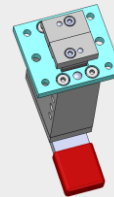
### CB4MA

Angle Bracket  
(6 orientations)



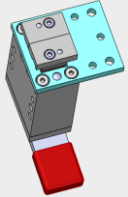
### CB4MF

Front Mount  
Plate - Centered



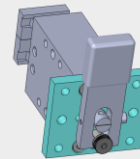
### CB4MFS

Front Mount  
Plate - Side



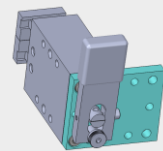
### CB4MRC

Rear Mount Plate - Centered



### CB4MRS

Rear Mount Plate - Side

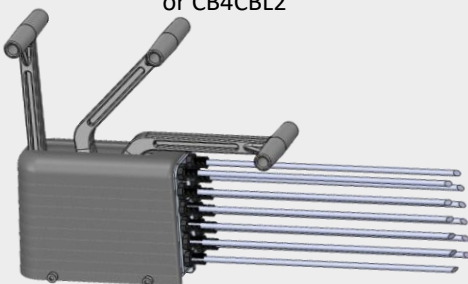


all mounting brackets have  $\varnothing 5$  dowel and M5 tapped holes

## CBRA12

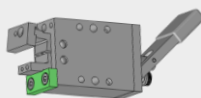
Remote Cable Actuator

For 1-12 units equipped with CB4CBL  
or CB4CBL2



### CB4ST1

Stop Plate  
For single-side opening



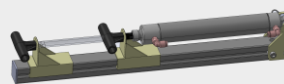
## Accessories

### Pneumatic Actuators

On-fixture actuation for Clip Buddies equipped  
with CB4CYL. Shop air hookup is not required

### CBPA6

(For 1-6  
CB4CYL Units)



Fittings included

### CBPA10

(For 1-10  
CB4CYL Units)



## CBRV

Regulator & Valve Set

For use with shop air

New  
Item



Fittings, bracket, and  
pressure gage included



www.fractal.engineering

More information at [www.fractal.engineering](http://www.fractal.engineering)  
or [info@fractal.engineering](mailto:info@fractal.engineering)

2020-10

