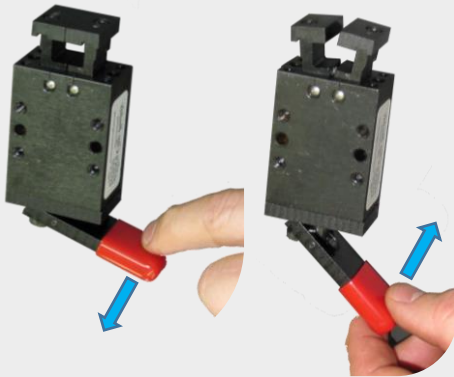


Clip Buddy

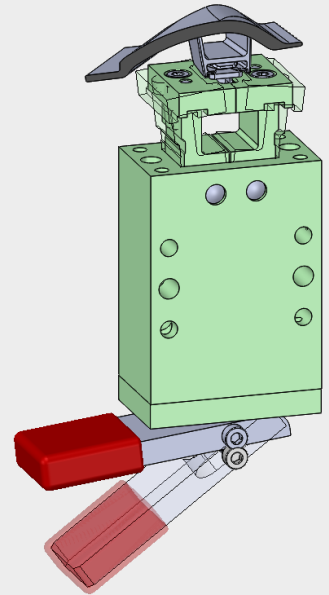
Patent 10,072,685

Clip holding device for fixtures

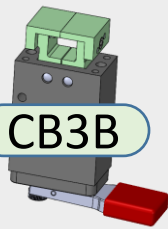
Lever Action Open and Close



- Compact design, requires less access space for actuation
- Solid, snap-action closing
- Smooth, operator-friendly motions
- Extensive Options Available:
 - 13 Jaw Options
 - 5 Mounting Brackets
 - 4 Manual Levers
 - Reliable cable and pneumatic actuations



CB3B



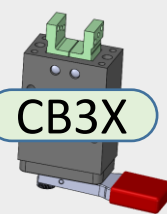
CB3BSS



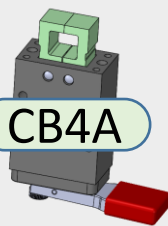
CB3L



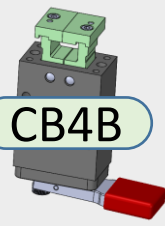
CB3X



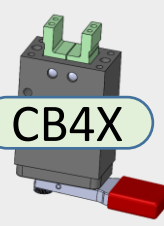
CB4A



CB4B



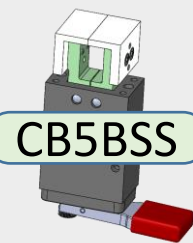
CB4X



CB5B



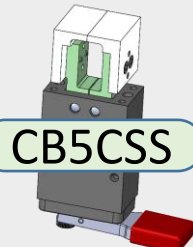
CB5BSS



CB5C



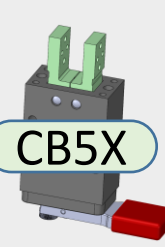
CB5CSS



CB5L



CB5X



* CBxxSS have SS 420 end pieces (standard versions have 1045 tool steel end pieces)



OPTIONS AND ACCESSORIES

Clip Buddy

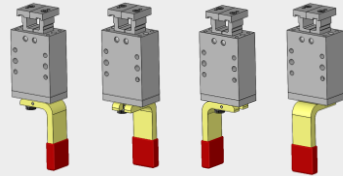
Patent 10,072,685

Actuation Options

(short lever shown on opposite side is standard)

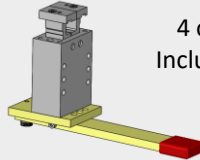
CB4L90

90 degree lever
(4 orientations)



CB4LG

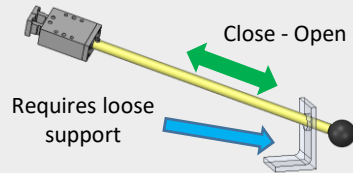
Long Lever



4 orientations.
Includes mounting holes

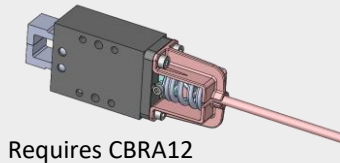
CB4LS

Long Shaft
(customer can cut to length)



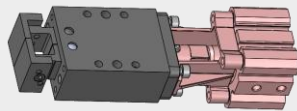
CB4CBL

Cable Assembly 2 meter
(CB4CBL-3M: 3 meter)



CB4CYL

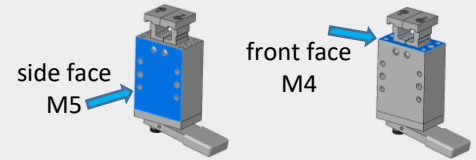
Pneumatic
Cylinder



Additional information sheet is available for pneumatic actuation

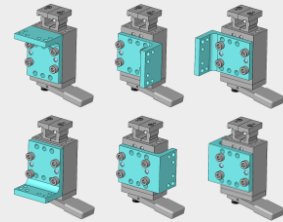
Mounting Options

Standard
Mounting
(included)



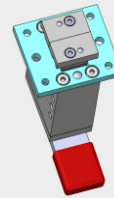
CB4MA

Angle Bracket
(6 orientations)



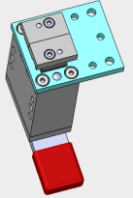
CB4MF

Front Mount
Plate - Centered



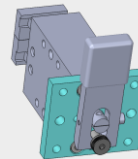
CB4MFS

Front Mount
Plate - Side



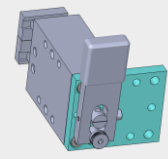
CB4MRC

Rear Mount Plate - Centered



CB4MRS

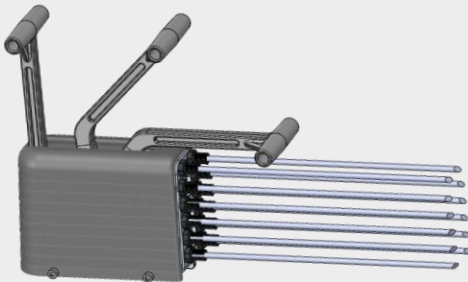
Rear Mount Plate - Side



all mounting brackets have $\varnothing 5$ dowel and M5 tapped holes

CBRA12

Remote Cable Actuator
For 1-12 units equipped with CB4CBL

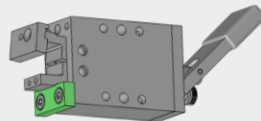


Smooth, operator-friendly actuation.
Reliable operation, simple adjustment

Accessories

CB4ST1

Stop Plate
For single-side opening

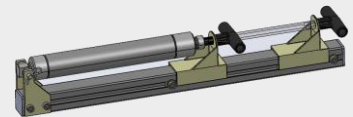


Pneumatic Actuators

On-fixture actuation for units equipped with
CB4CYL. Air hookup is not required
(additional information sheet is available for pneumatic actuators)

CBPA6

(For 1-6
CB4CYL Units)



CBPA10

(For 1-10
CB4CYL Units)

